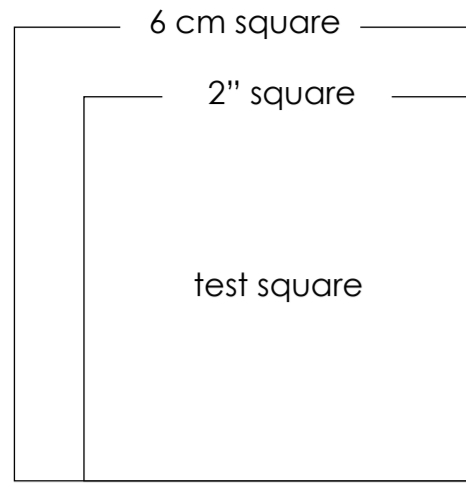


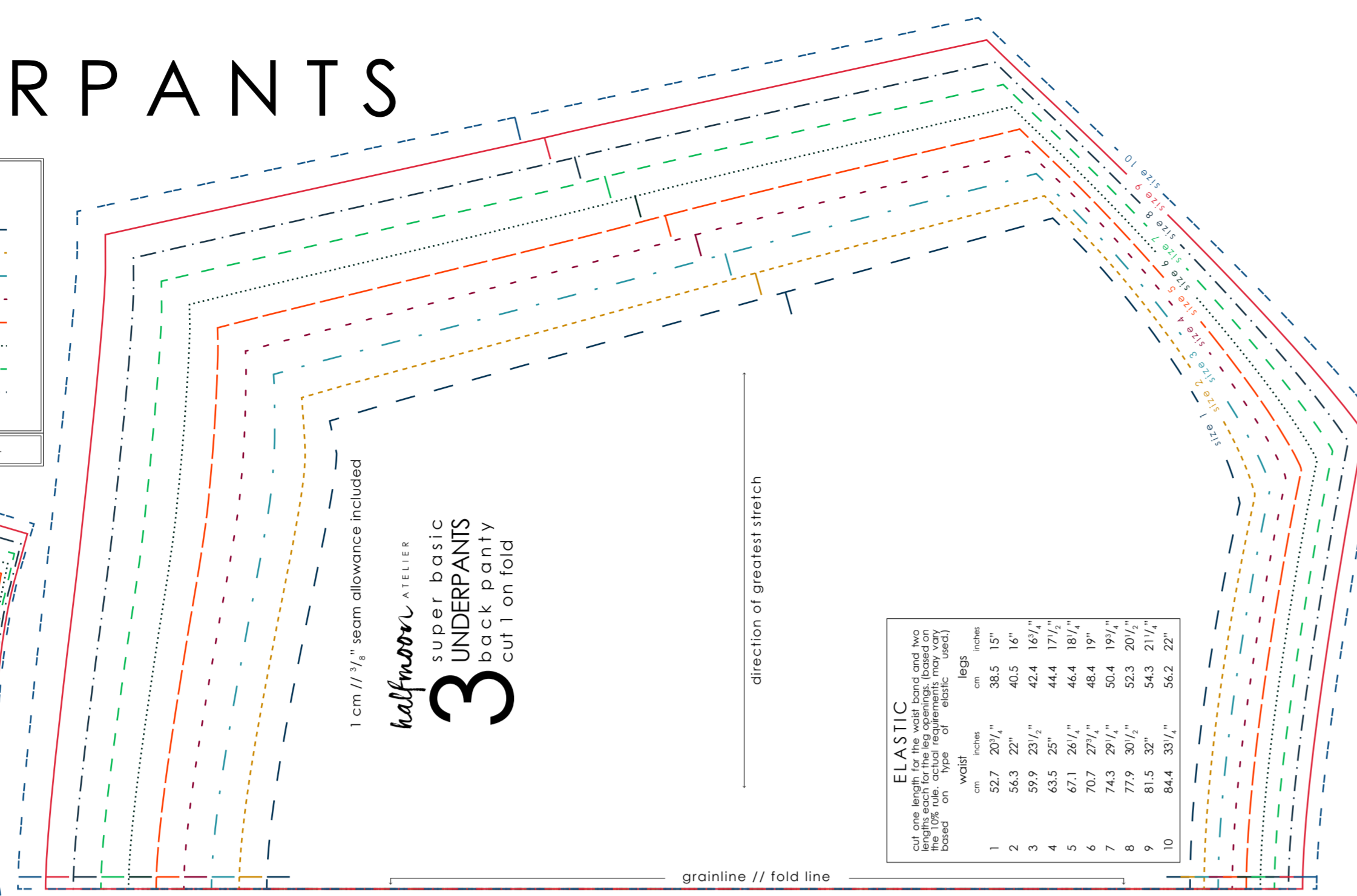
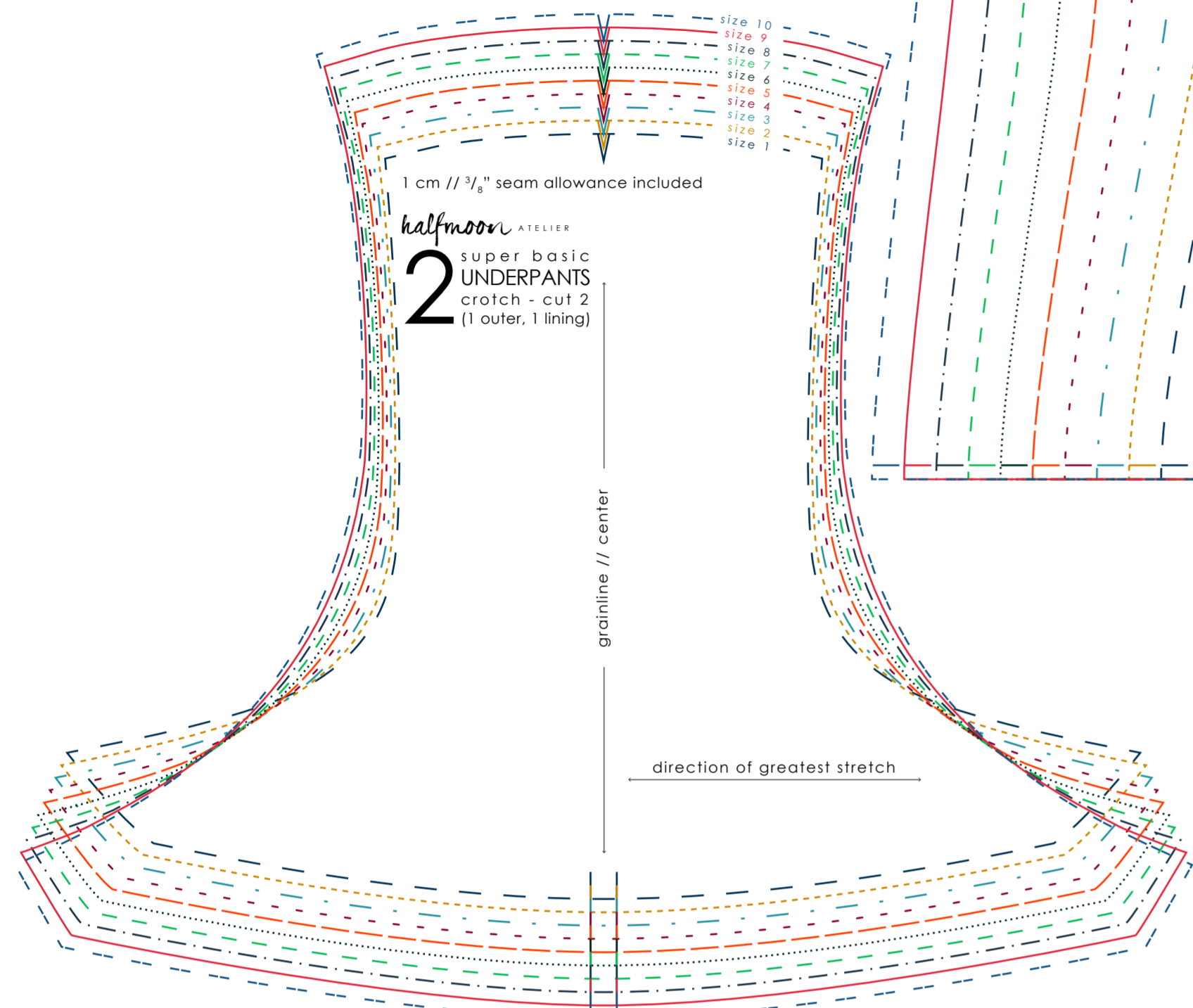
# super basic UNDERPANTS



**SIZE KEY**

1	11
2	12
3	13
4	14
5	15
6	16
7	17
8	18
9	19
10	20

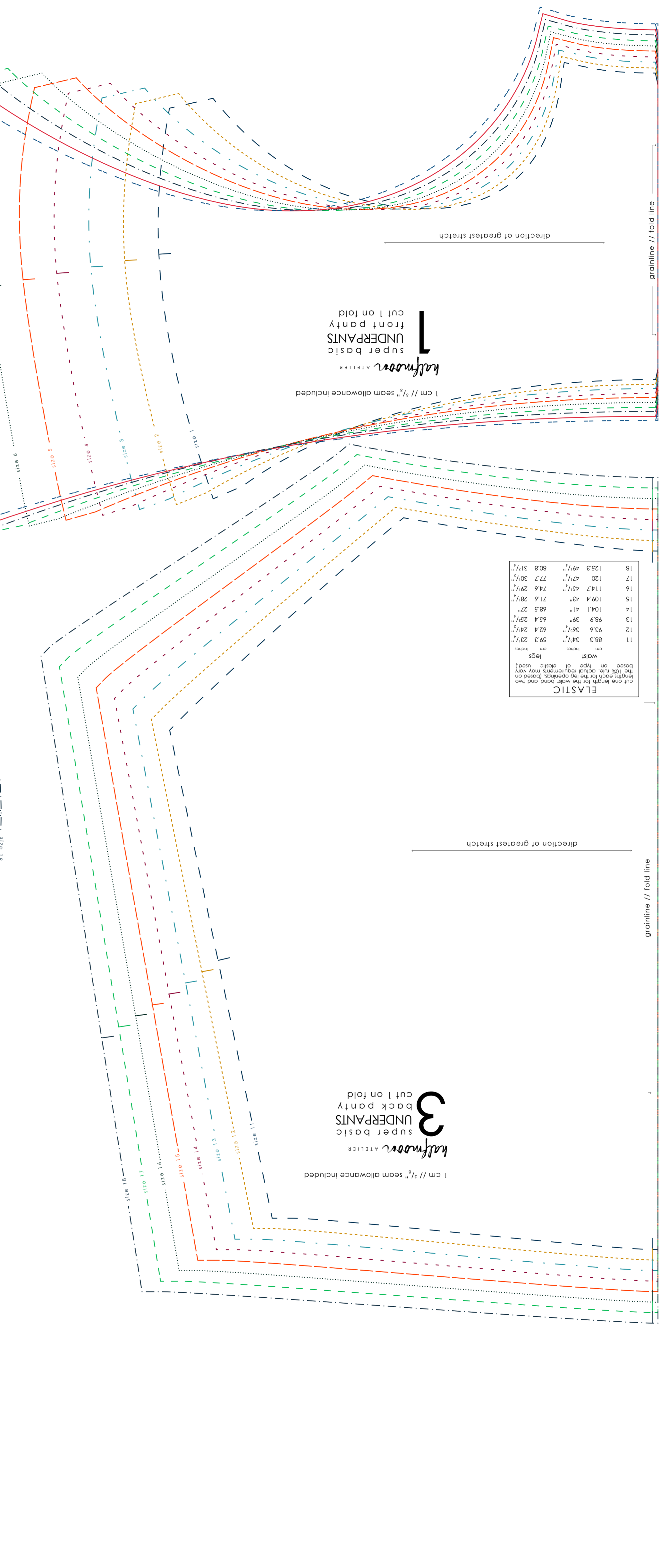
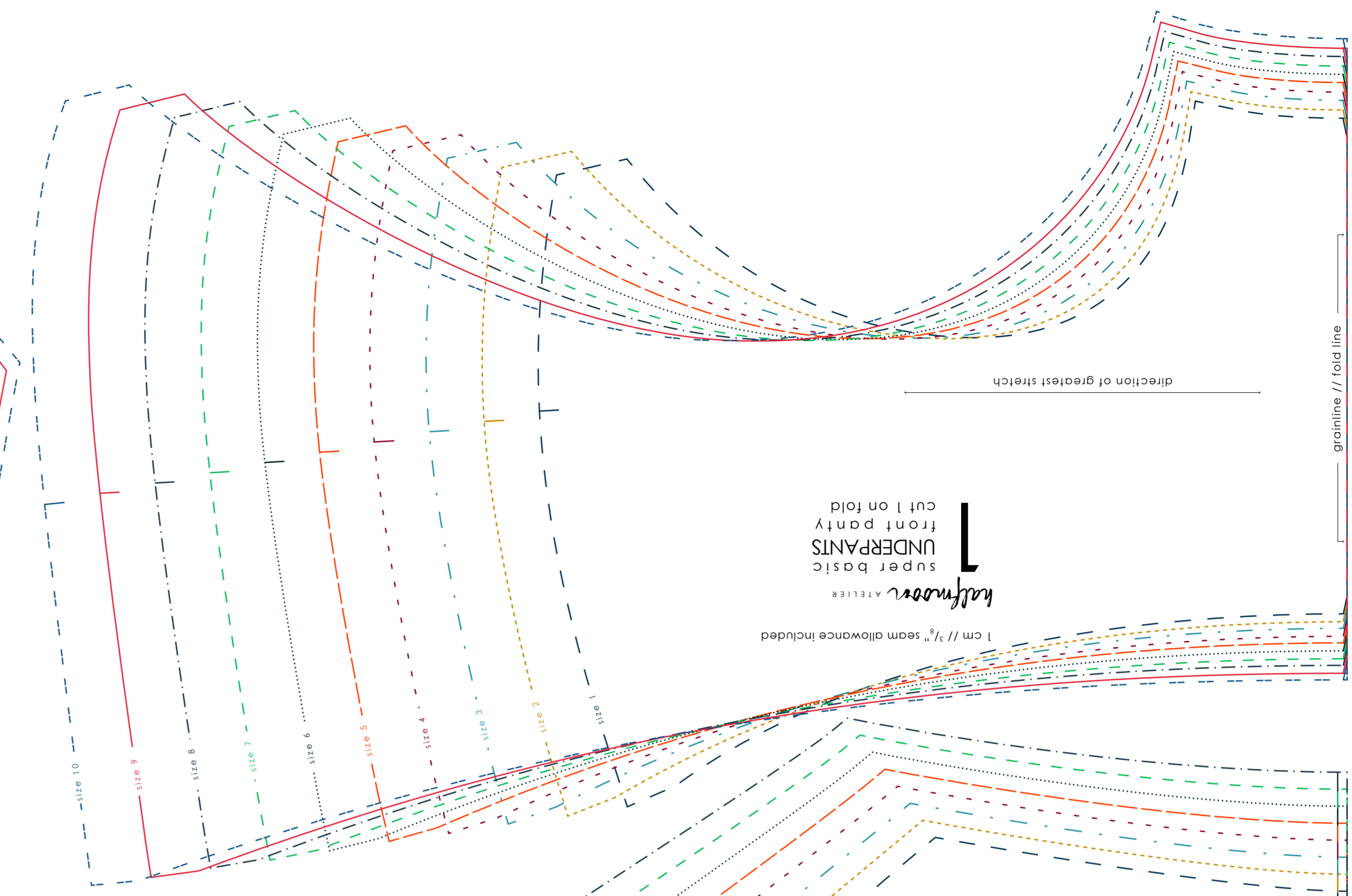
©2019, halfmoon atelier all rights reserved.



**ELASTIC**

width  
length  
type of elastic

width	length	type of elastic
1	52.7 20 1/2"	38.5 1 1/2"
2	56.3 22"	40.5 1 5/8"
3	59.9 23 1/2"	42.4 1 6 1/2"
4	63.5 25"	44.4 1 7 1/2"
5	67.1 26 1/2"	46.4 1 8 1/2"
6	70.7 27 1/2"	48.4 1 9"
7	74.3 29 1/2"	50.4 1 9 1/2"
8	77.9 30 1/2"	52.3 20 1/2"
9	81.5 32"	54.3 21 1/2"
10	84.4 33 1/2"	56.2 22"



**ELASTIC**

width  
length  
type of elastic

width	length	type of elastic
11	88.3 34 1/2"	59.3 23 1/2"
12	93.6 36 1/2"	62.4 24 1/2"
13	98.9 38"	65.4 25 1/2"
14	104.1 41"	68.5 27"
15	109.4 43"	71.6 28 1/2"
16	114.7 45 1/2"	74.6 29 1/2"
17	120 47 1/2"	77.7 30 1/2"
18	125.3 49 1/2"	80.8 31 1/2"

based on type of elastic used.  
Cut one length for the waistband and two lengths each for the leg openings. (based on the 100% elastic requirement from 100% stretch.)